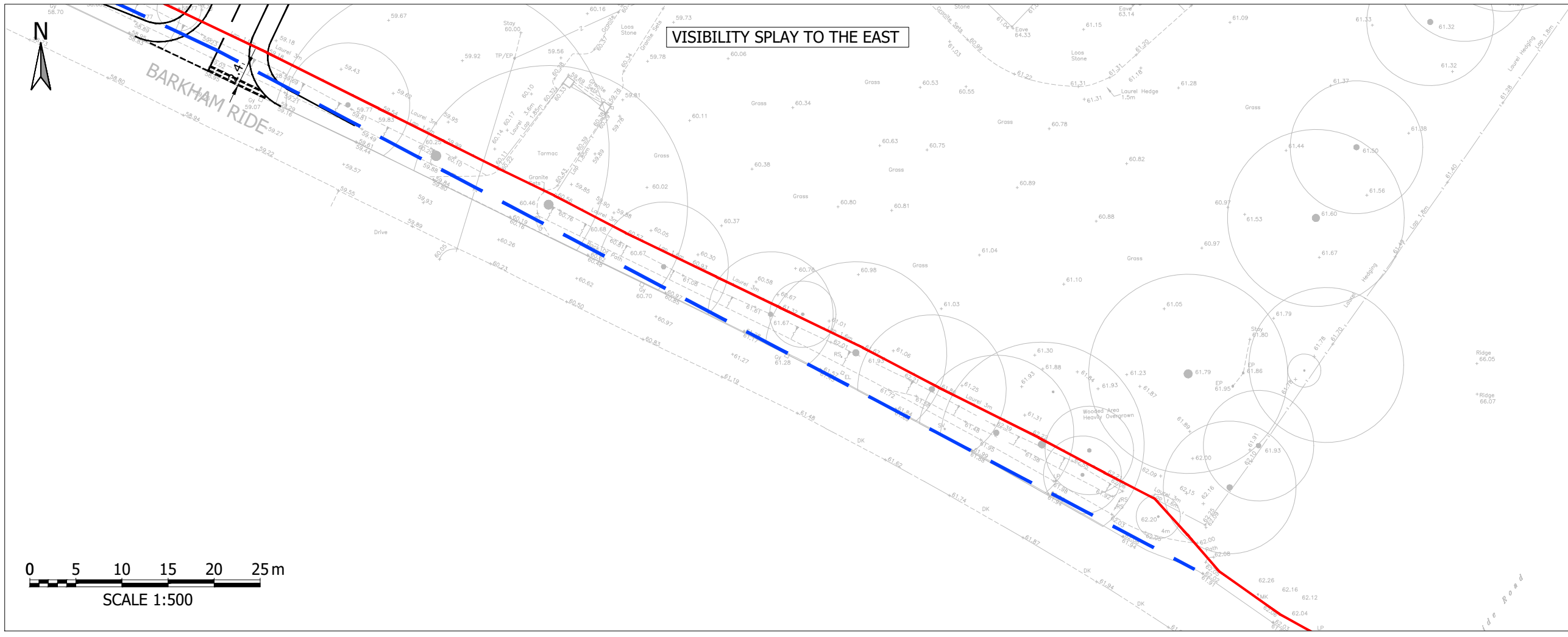
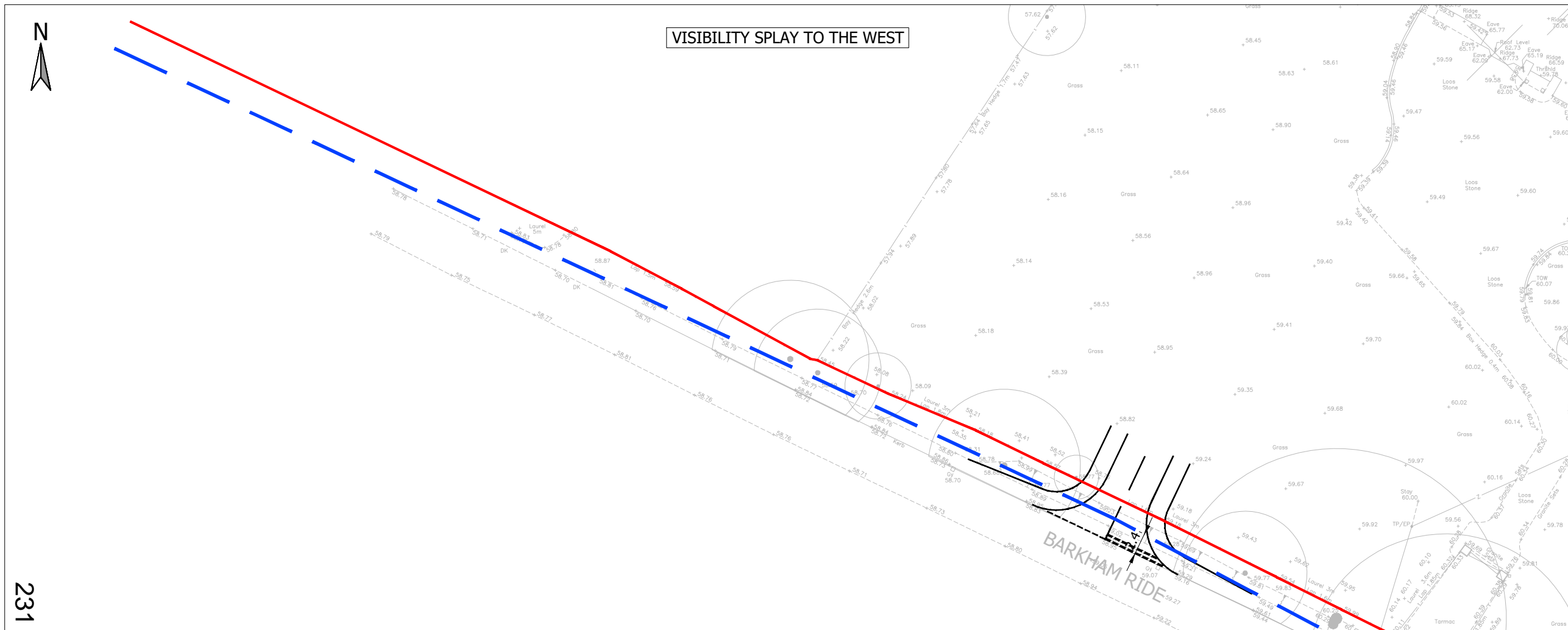


\\London02.wyg.com\sba\X-Drive\Projects\A11000\A118501 - Barkham Ride, Finchampstead\50 Drawings\51 CAD\784-B042599 - SK0001-SK0003-P02.dwg



- Notes:**
- General**
1. Do not scale from drawing.
 2. All dimensions are in metres, unless stated otherwise.
 3. This drawing is to be read & printed in colour.
 4. This drawing is for illustrative purposes only.

Disclaimer

1. The information contained in this drawing is based on a combination of OS and data provided by others and Tetra Tech shall not be liable for any inaccuracies or deficiencies.

- KEY:**
- 2.4m x 120m visibility splay based on speed restriction of 40 mph
 - Highway boundary

PRELIMINARY ISSUE

Rev	Description	Date	Drn / Cbk / App
P02	AMENDMENTS TO TREE LOCATION	15.12.2023	SJR GS NW
P01	PRELIMINARY FIRST ISSUE	27.07.2023	SJR GS NW

Document Control

Tetra Tech London
11th Floor, 1 Angel Court, London, United Kingdom, EC2R 7HJ
Tel: +44 (0)20 7250 7500
www.tetratechurope.com



Client
ELIVIA HOMES

Project Name
**33 BARKHAM RIDE
FINCHAMPSTEAD**

Sheet Title
ACCESS ARRANGEMENT & VISIBILITY SPLAYS

TTE Project Number	Drawn By	Date	Checked By	Date	Approved By	Date	Scale @ A3	Suitability
B042599	SJR	JULY 23	GS	JULY 23	NW	JULY 23	1:250	S3
Client Project Number	Originator	Volume/System	Level/Location	Type/Code	Rate	Number	Revision	
-	TTE	- 00	- XX	- SK	- O	- 0002	P02	

This page is intentionally left blank